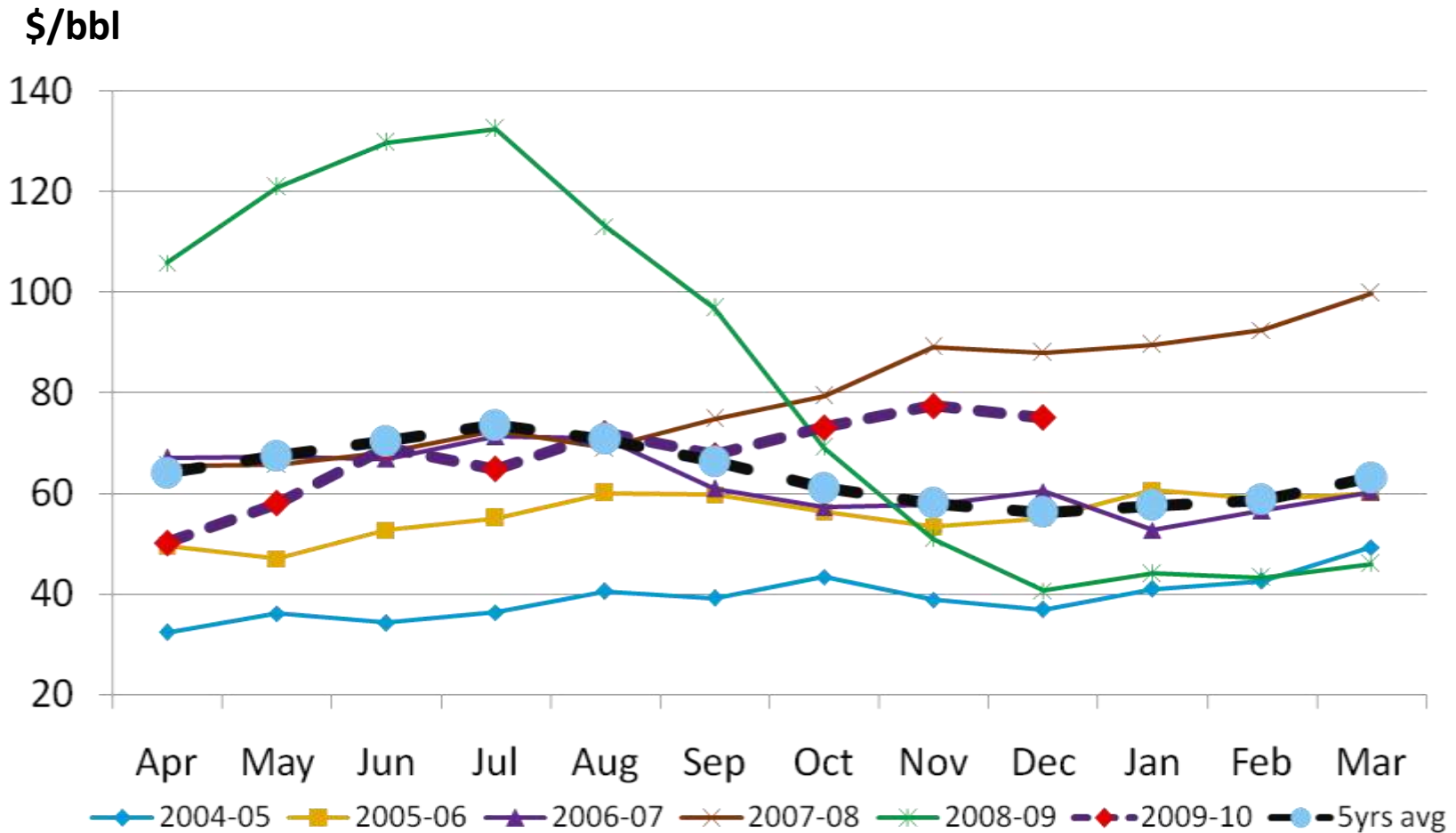


# Price Trend of Indian Basket of Crude Oil



- Data for 2009-10 is up to 31<sup>st</sup> Dec. 09

-The composition of Indian Basket of Crude represents Average of Oman & Dubai for sour grades and Brent (Dated) for sweet grade in the ratio of 63.5 : 36.5 w.e.f 1<sup>st</sup> april'2009, 62.3:37.7 for 2008-09, 61.4:38.6 for 2007-08, 59.8:40.2 for 2006-07 , 58:42 for 2005-06 and 57:43 for the prior period.